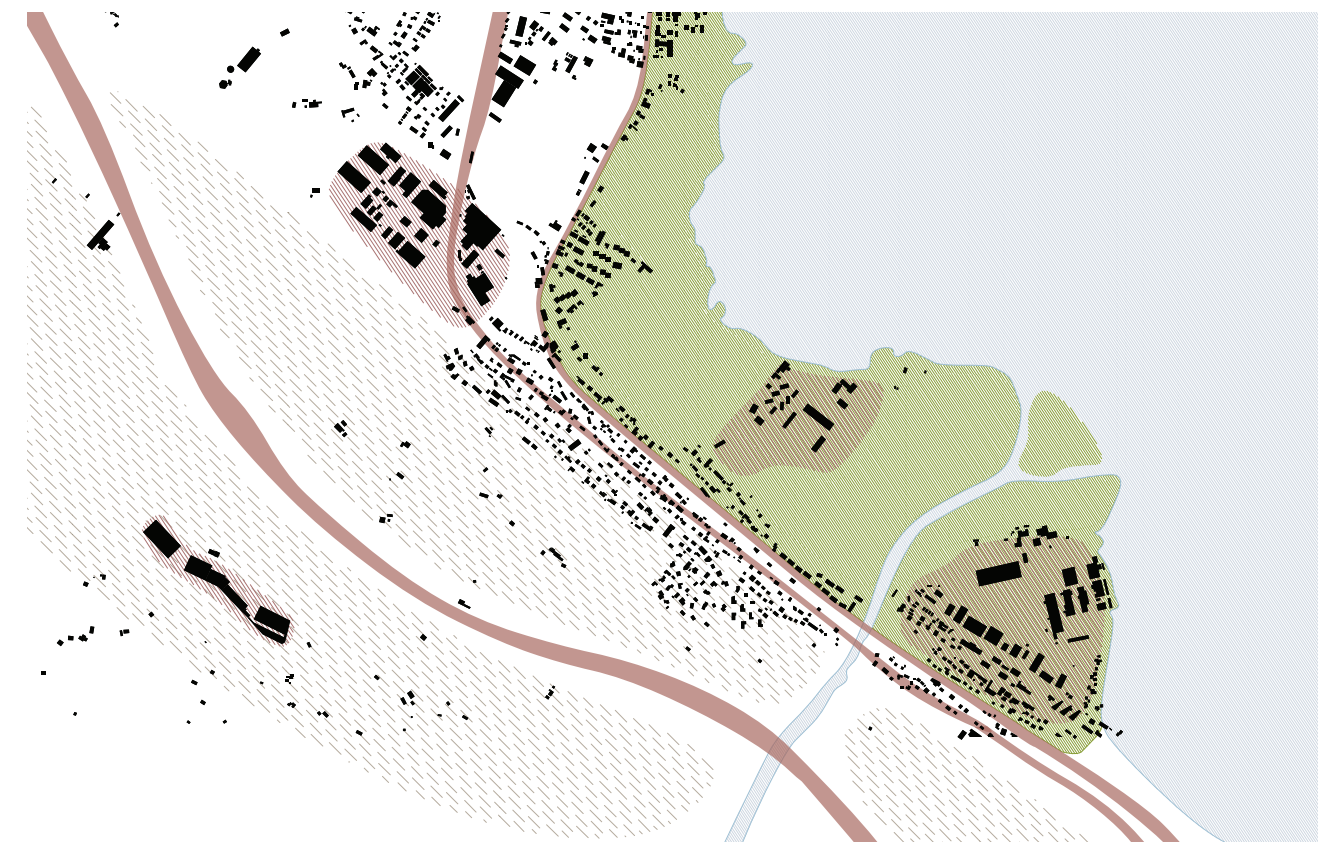
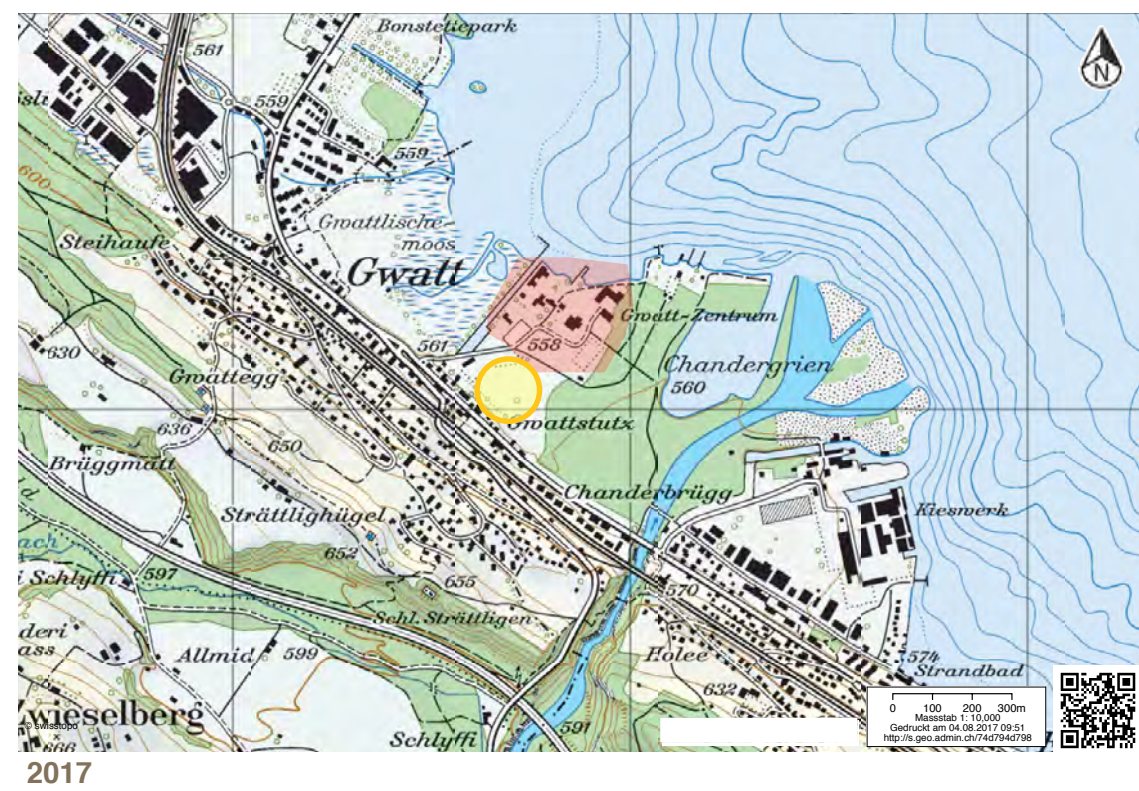
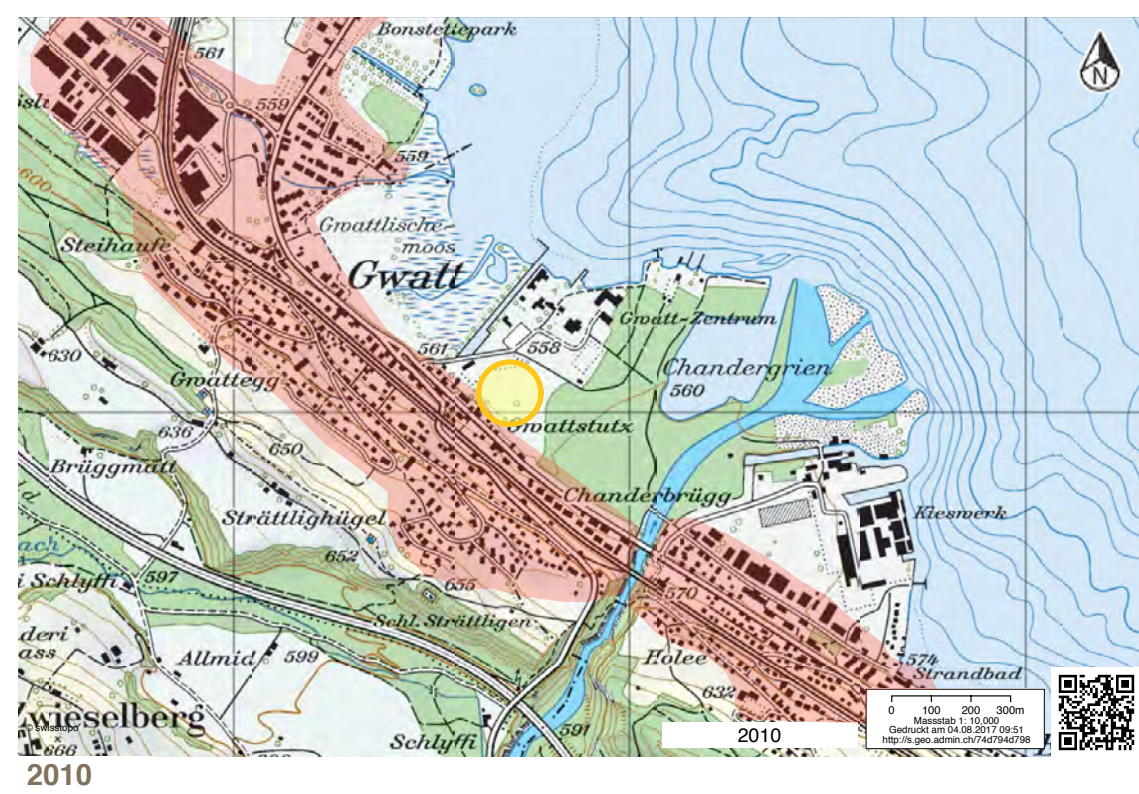
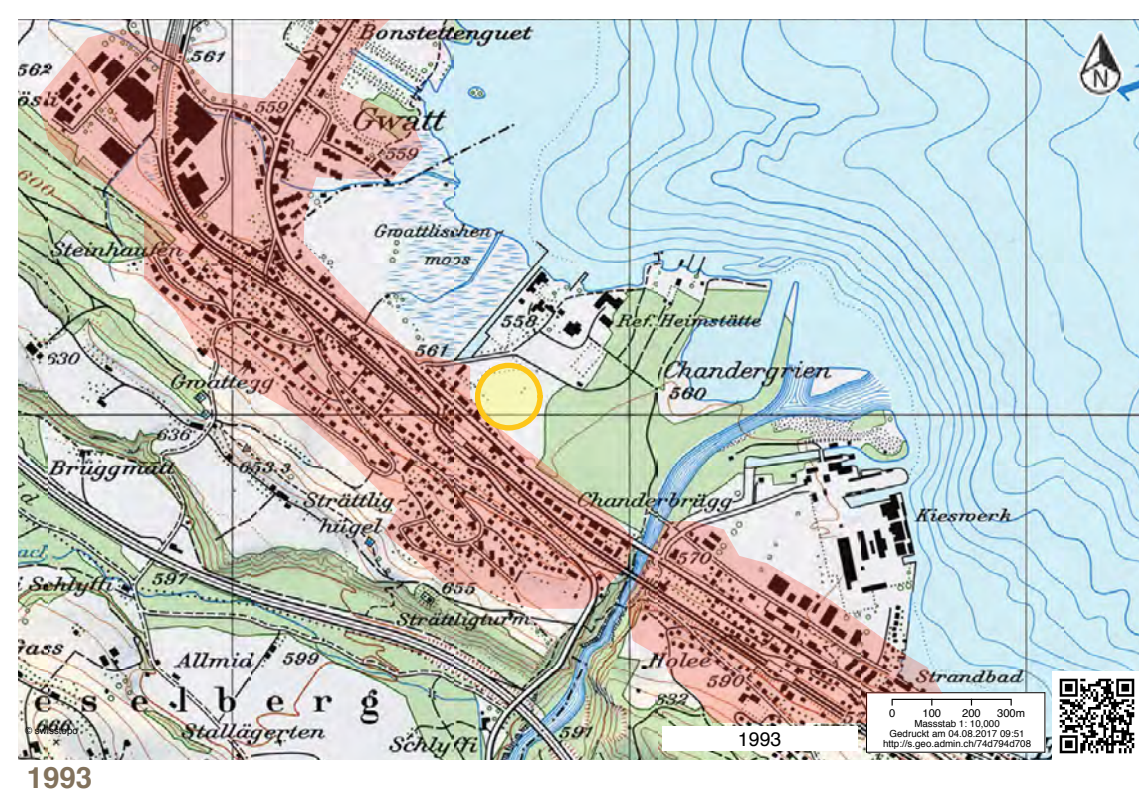
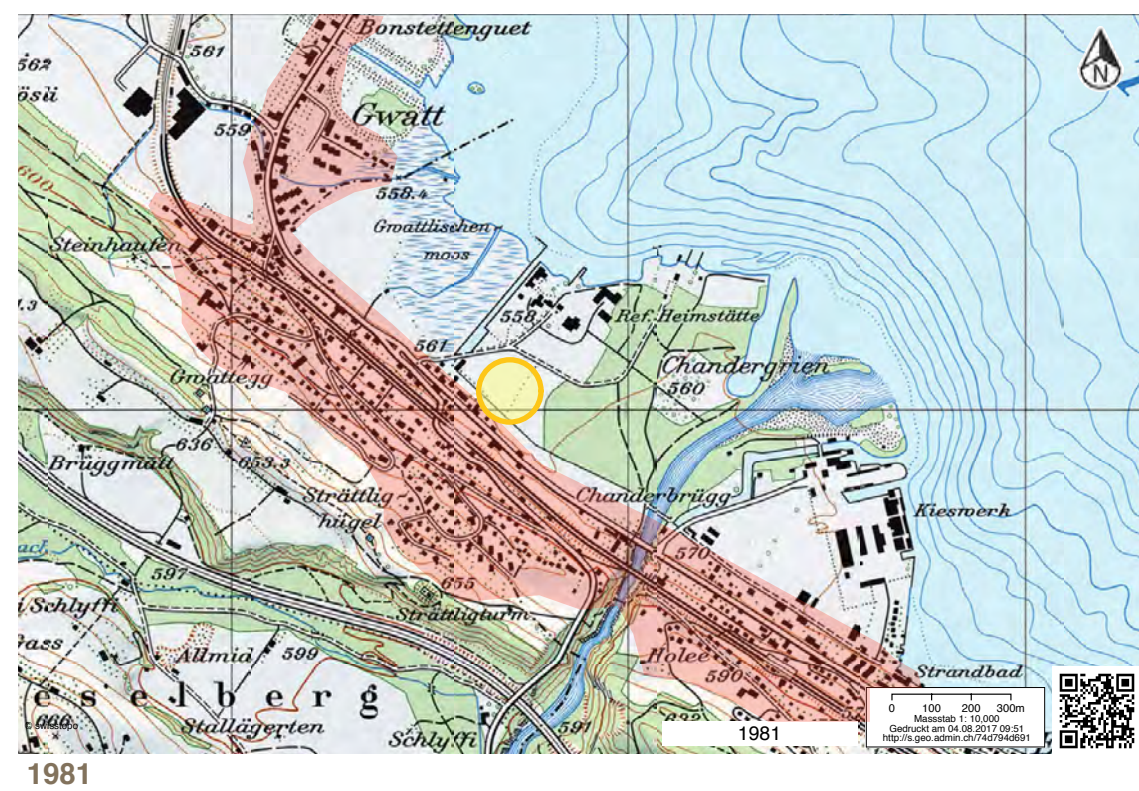
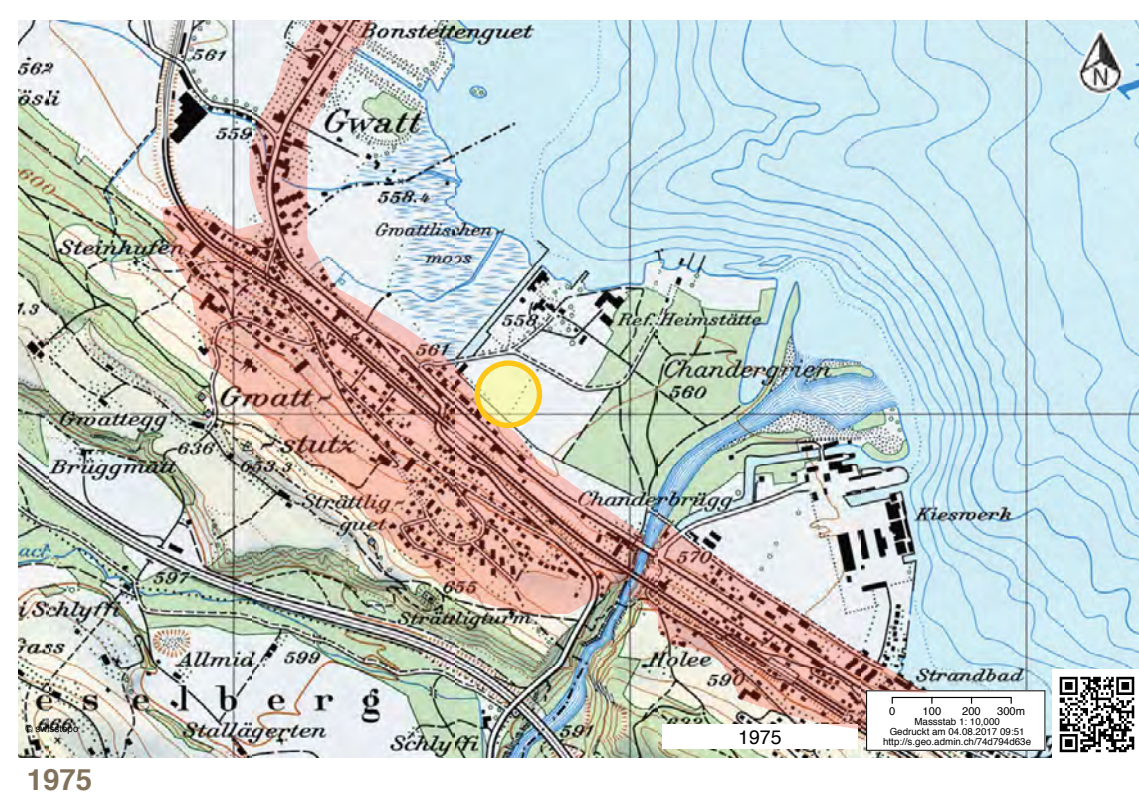
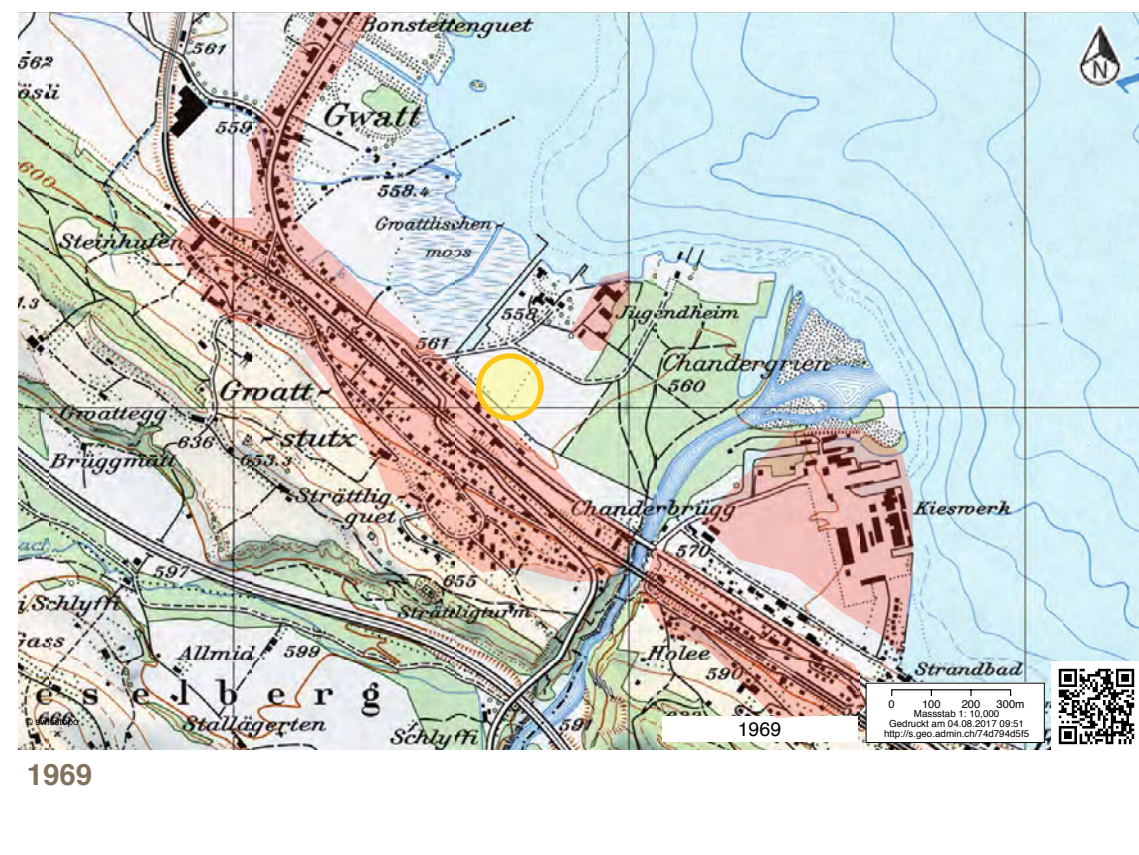
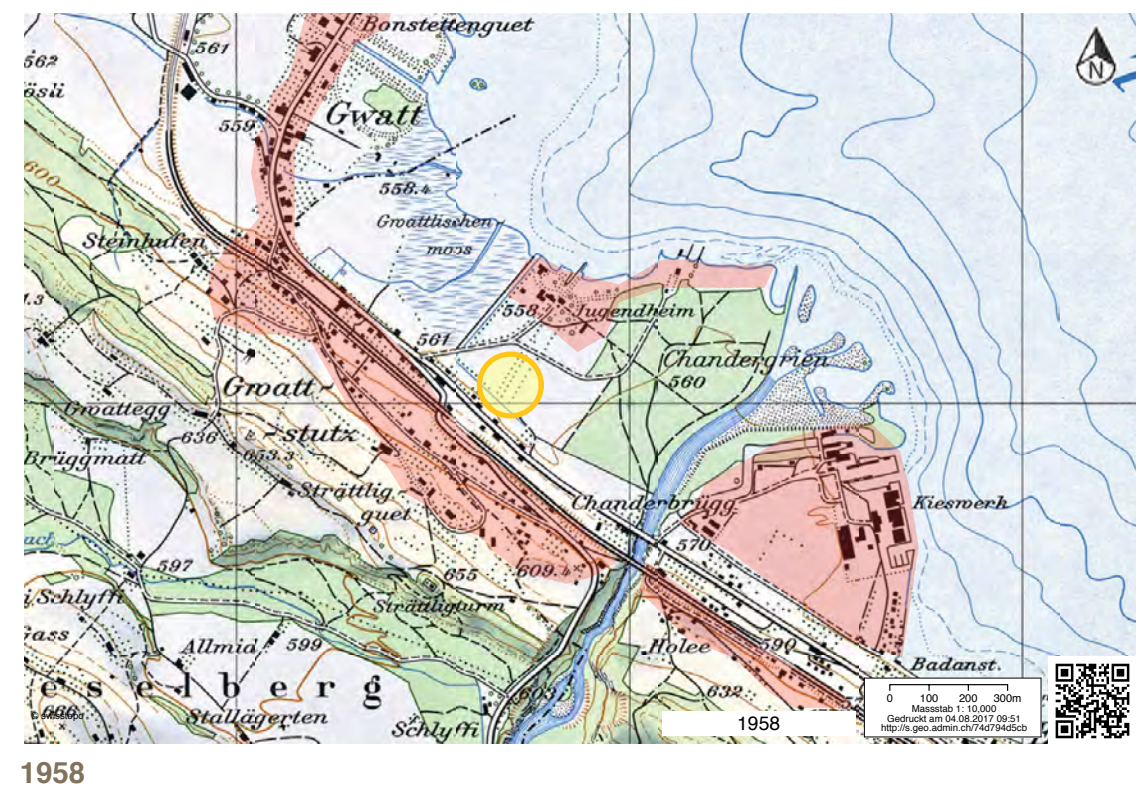
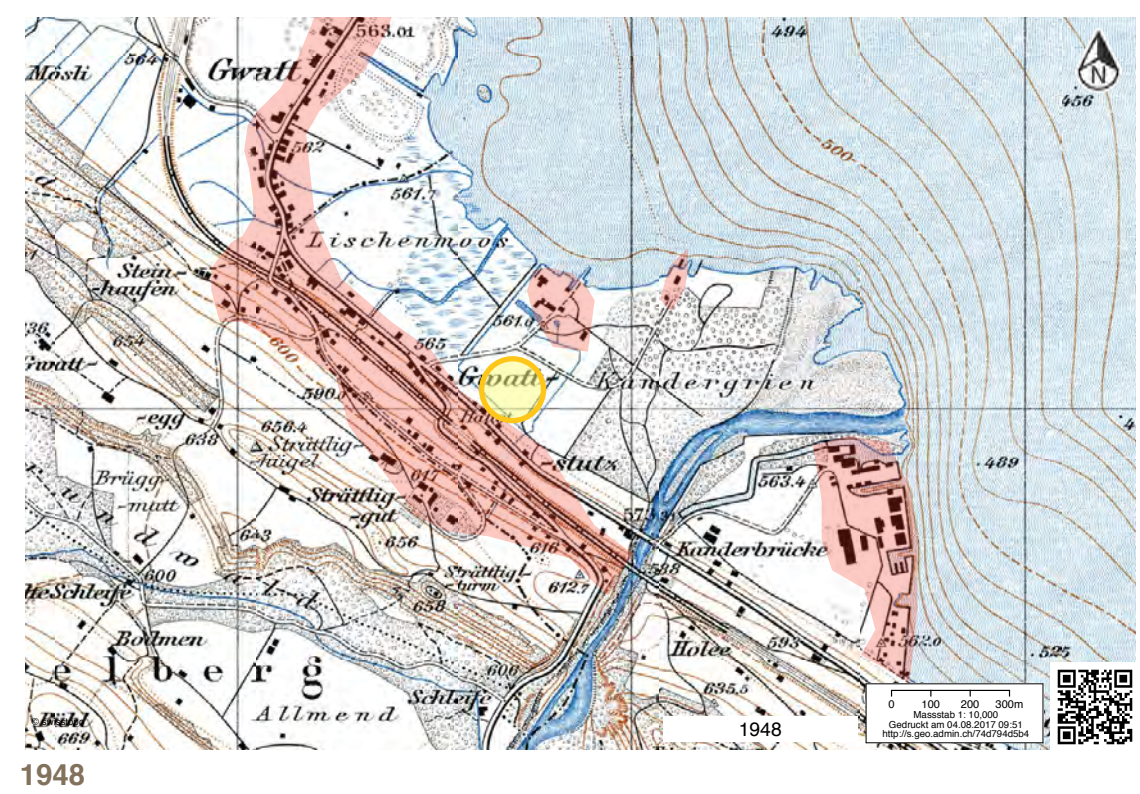
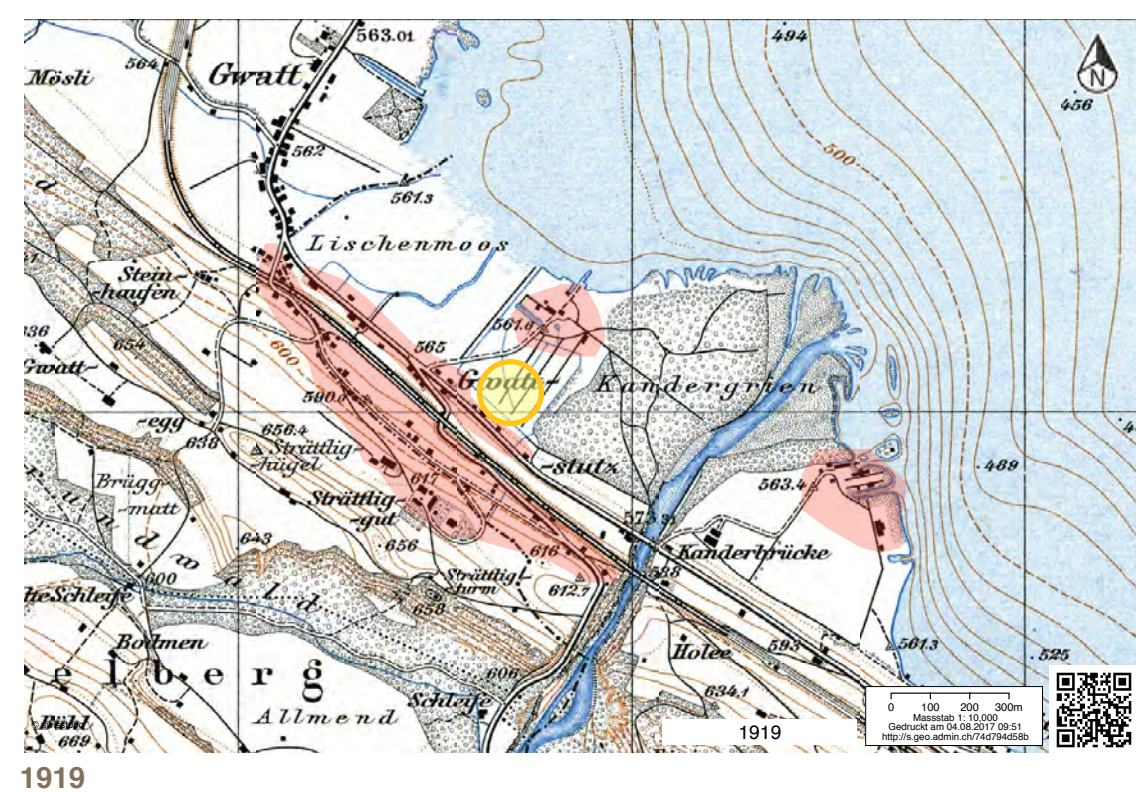
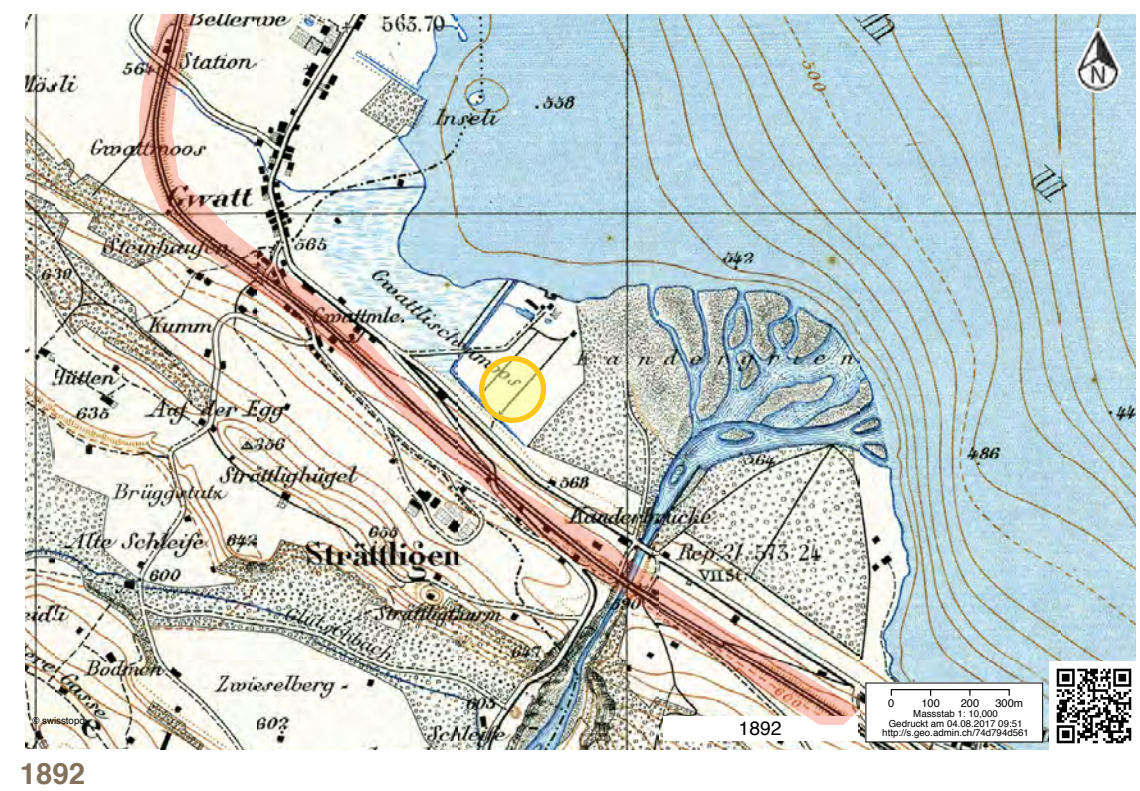
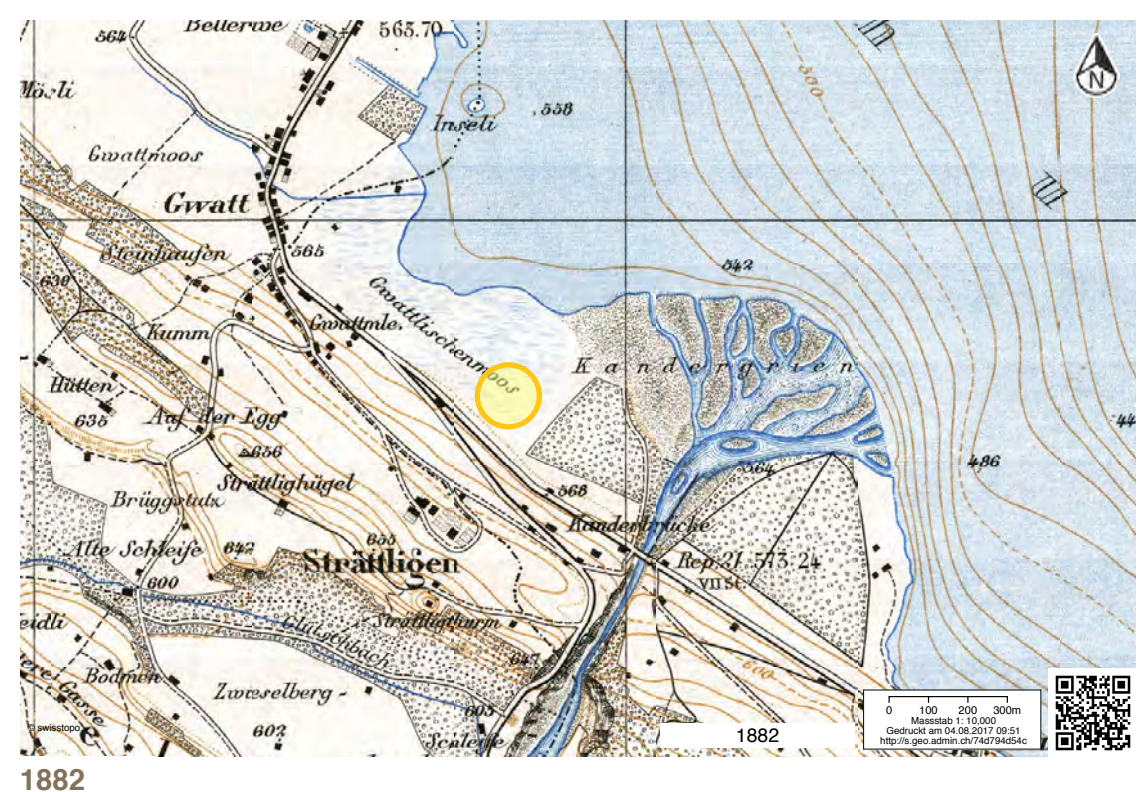
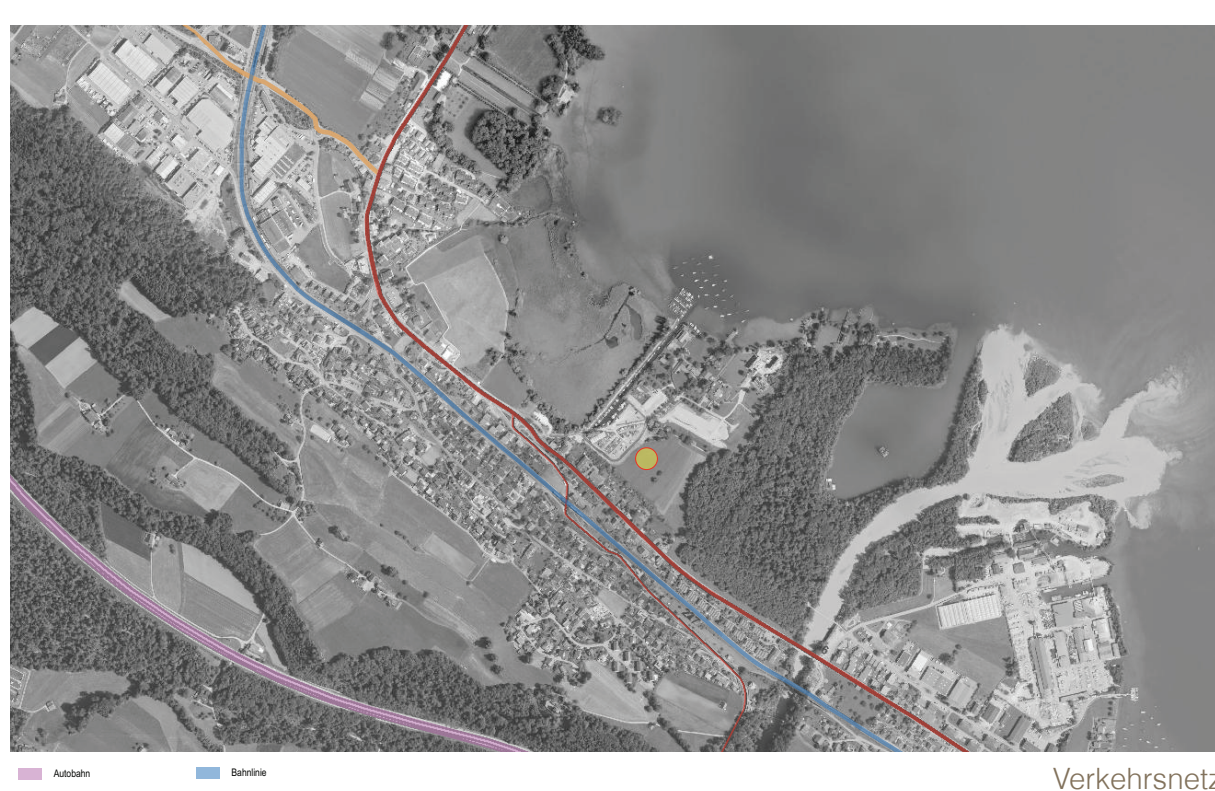
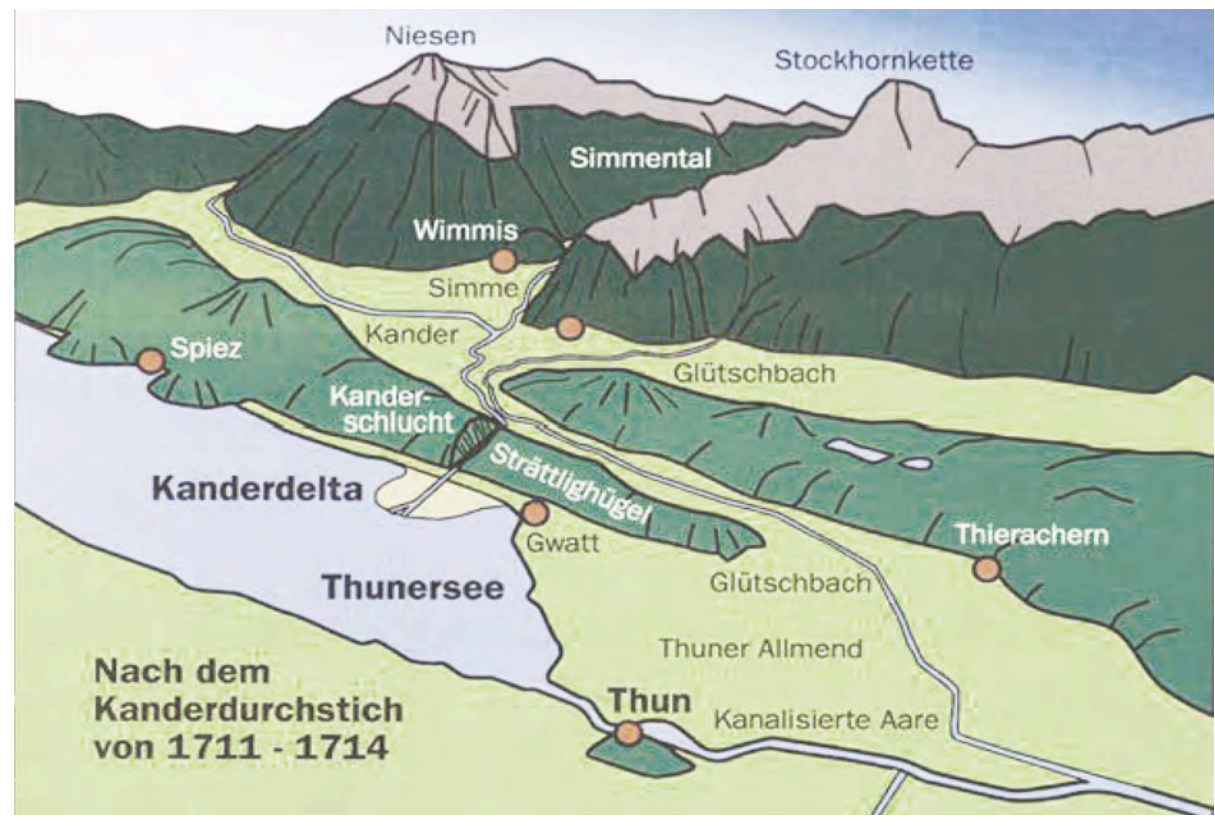
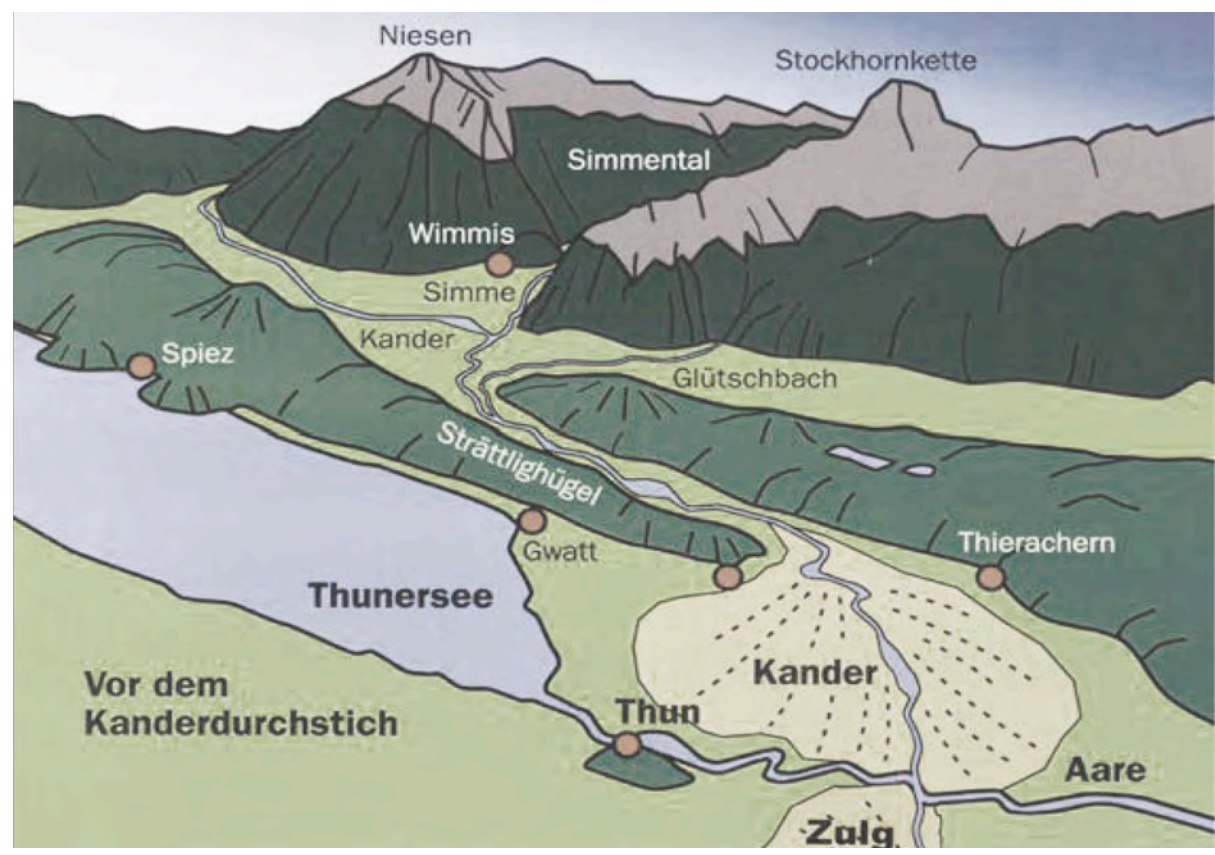


Arealentwicklung ZPP Unteres Kandergrien

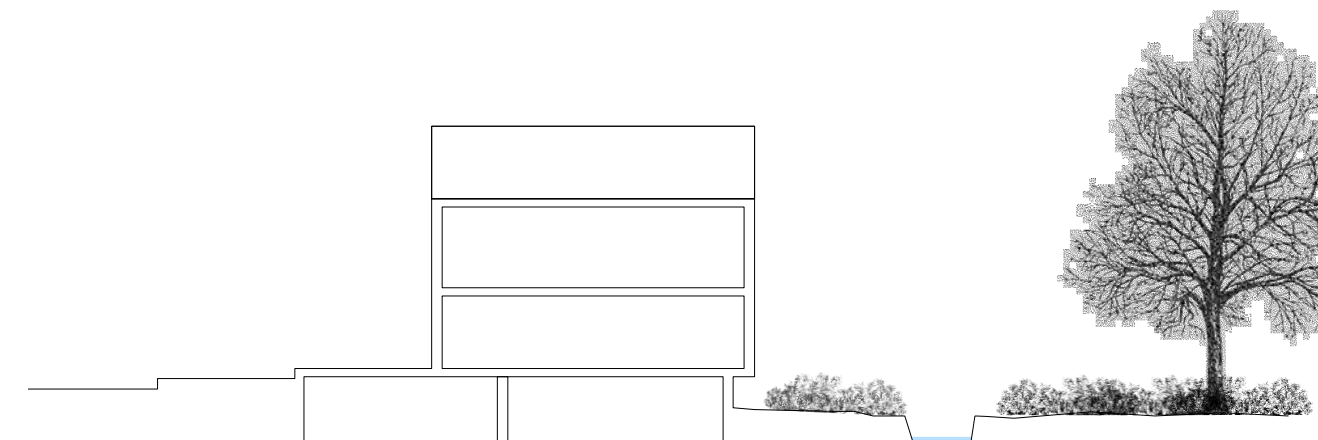
Gemeinde Spiez / Bauherrengesellschaft Unteres Kandergrien, Januar 2018



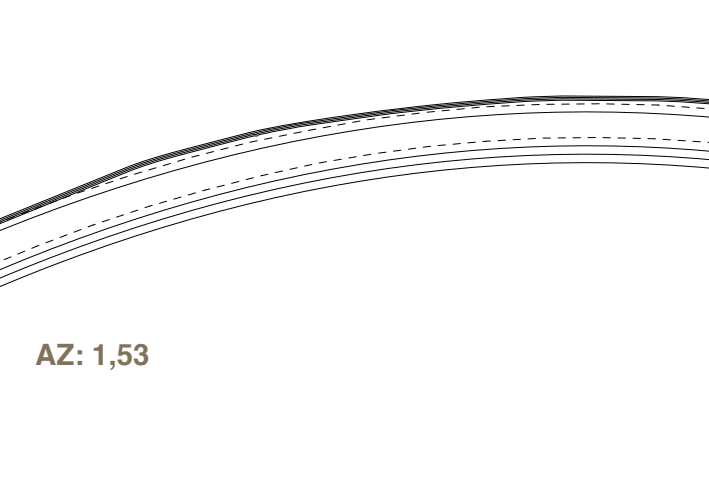
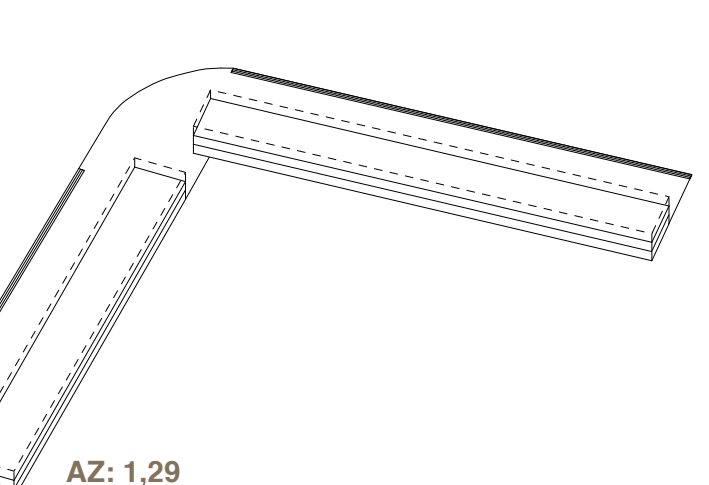
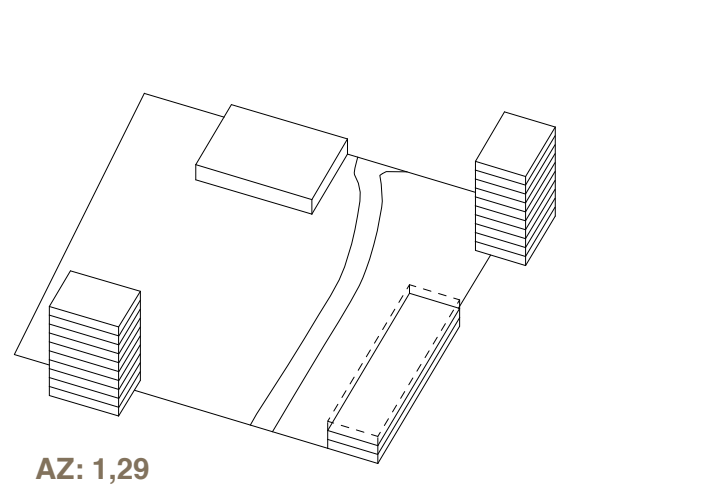
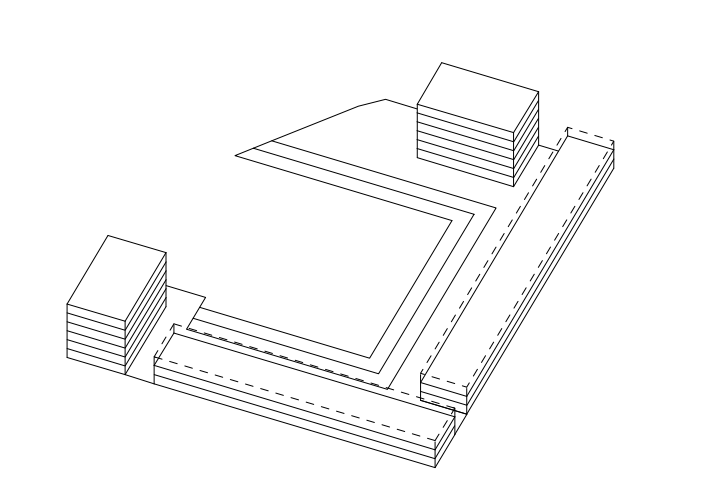
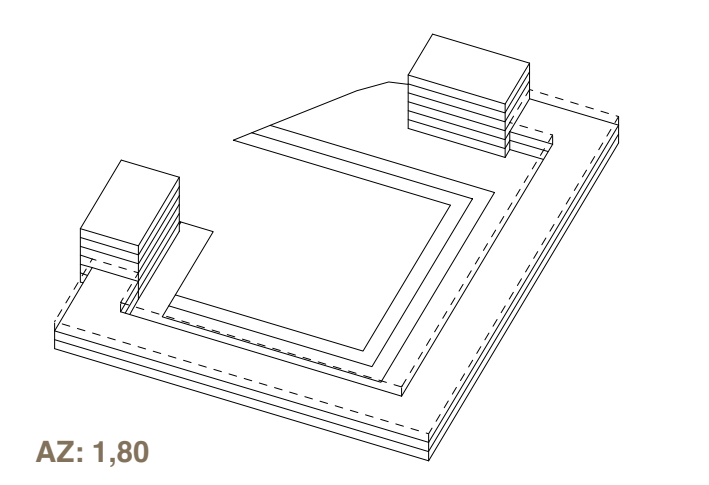
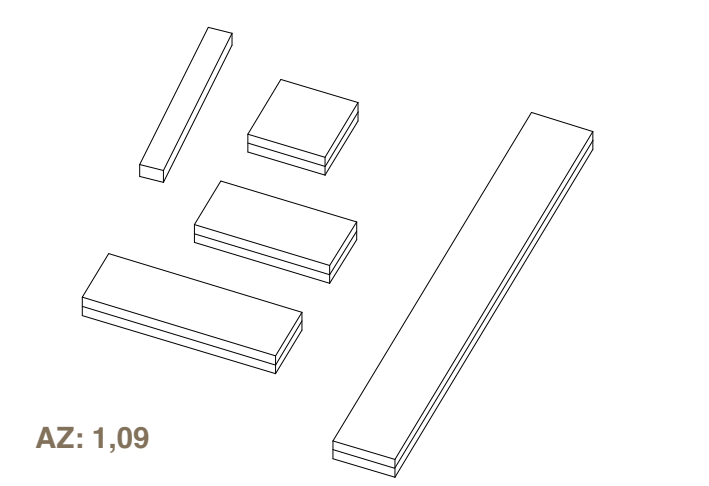
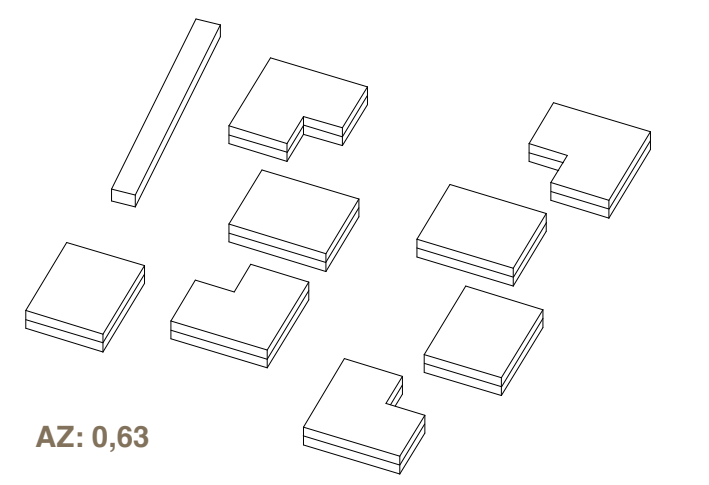
Lineare Entwicklung der Siedlung und Infrastruktur



Bildung von Clustern



Sarkhej Roza Tank, 15. Jahrhundert, Ahmedabad, India



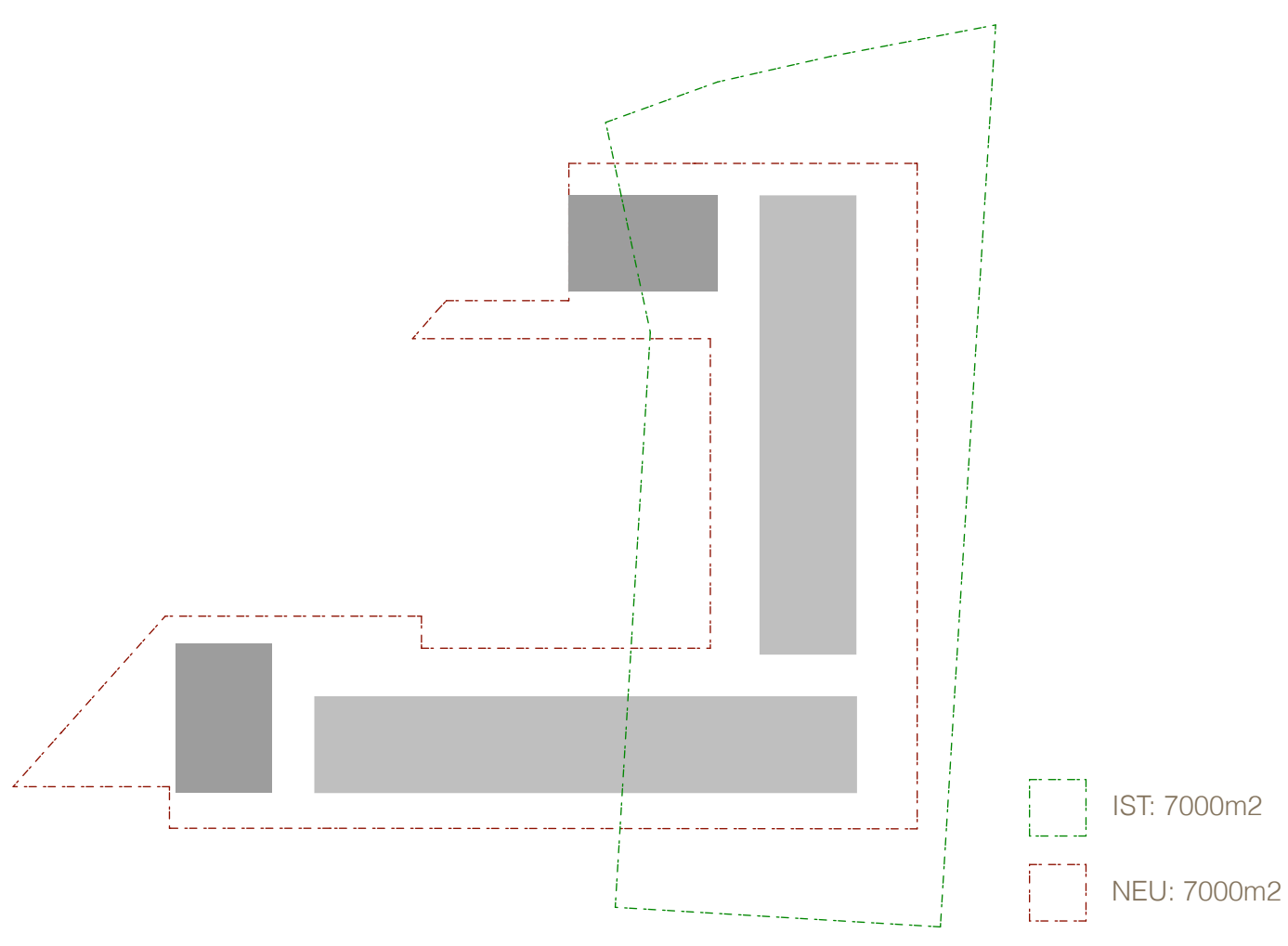
Konzepte



Arealentwicklung ZPP Unteres Kandergrien
 Gemeinde Spiez / Bauherrengesellschaft Unteres Kandergrien, Januar 2018



Dachgeschoss 1:1000



Variante 4.1

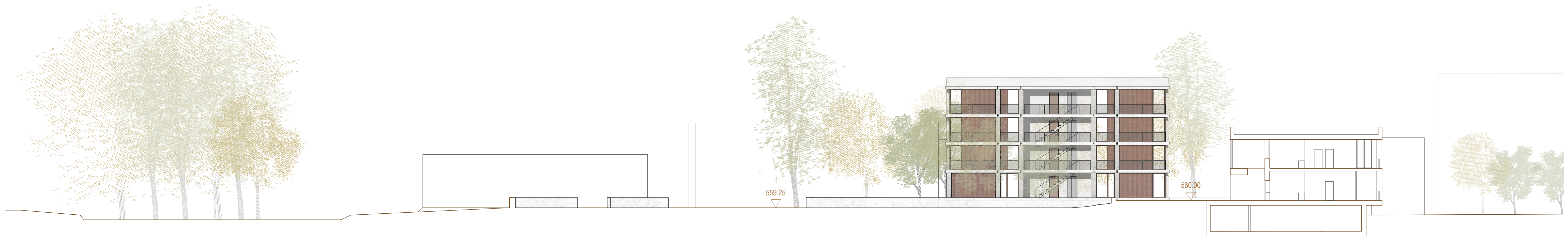
6710m²/7000m²

GFZ: **0.96**

Anzahl Wohnungen: 65
 Anzahl Parkplätze: 90

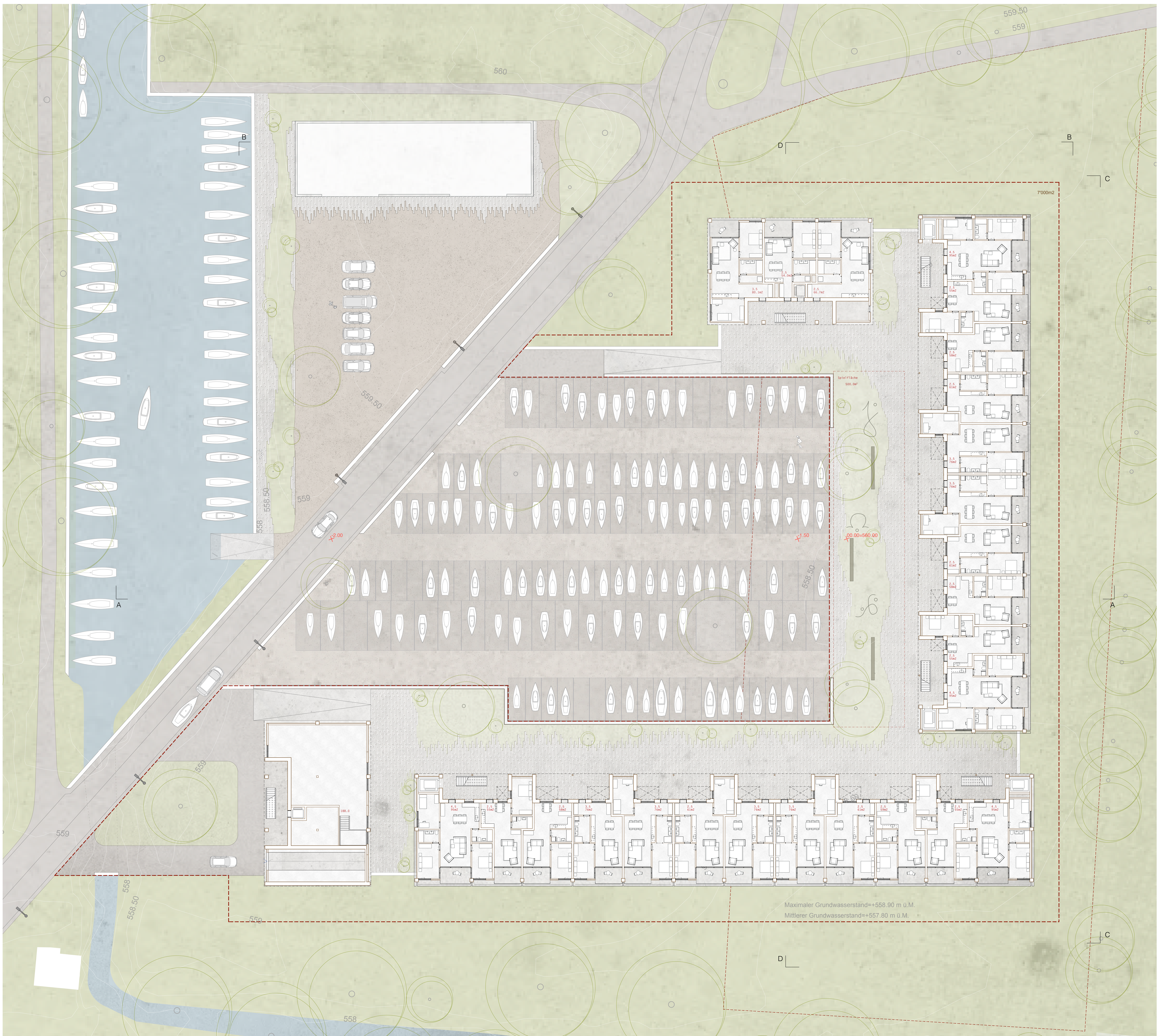
Wohnungsmix

2.5	34 (52%)
3.5	23 (35%)
4.5	8 (12%)



Schnitt AA

Arealentwicklung ZPP Unteres Kandergrien
 Gemeinde Spiez / Bauherrengesellschaft Unteres Kandergrien, Januar 2018



⊗ Erdgeschoss 1:200



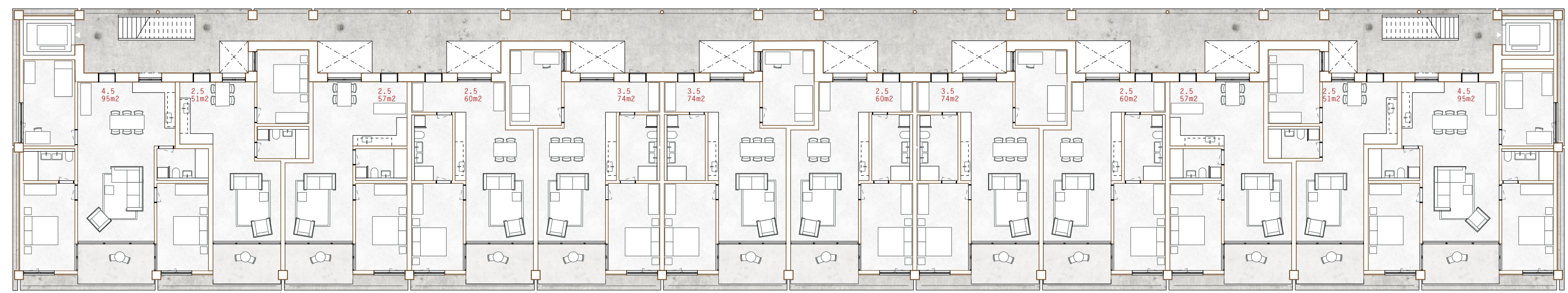
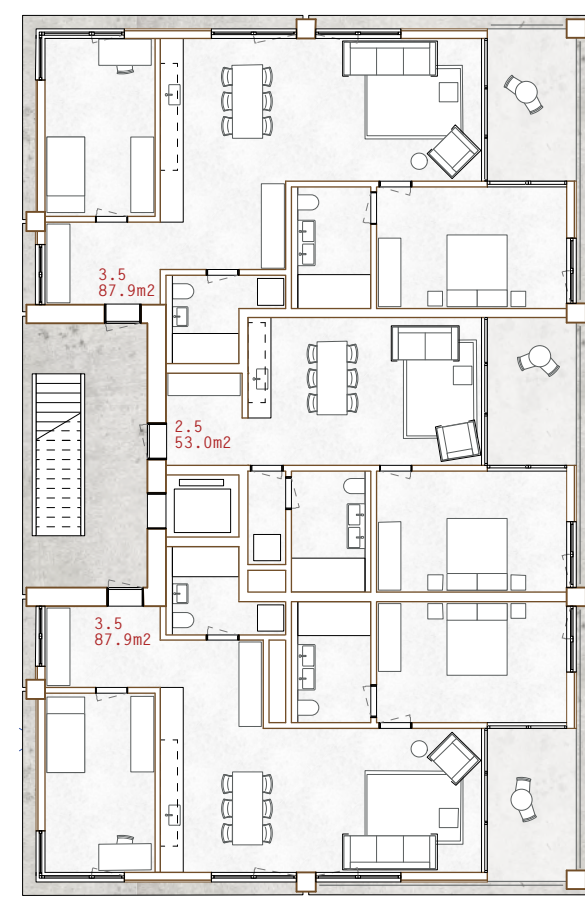
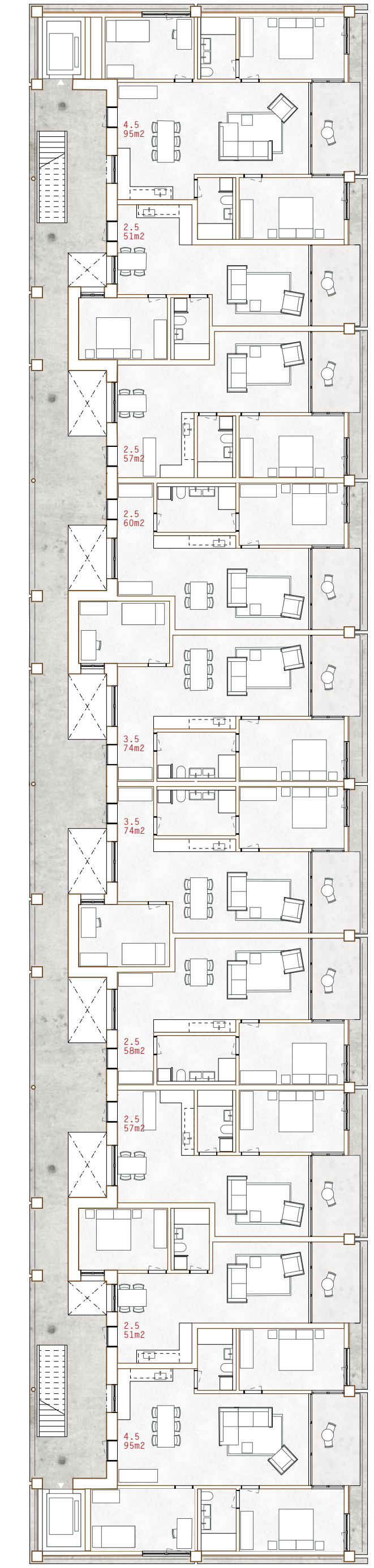
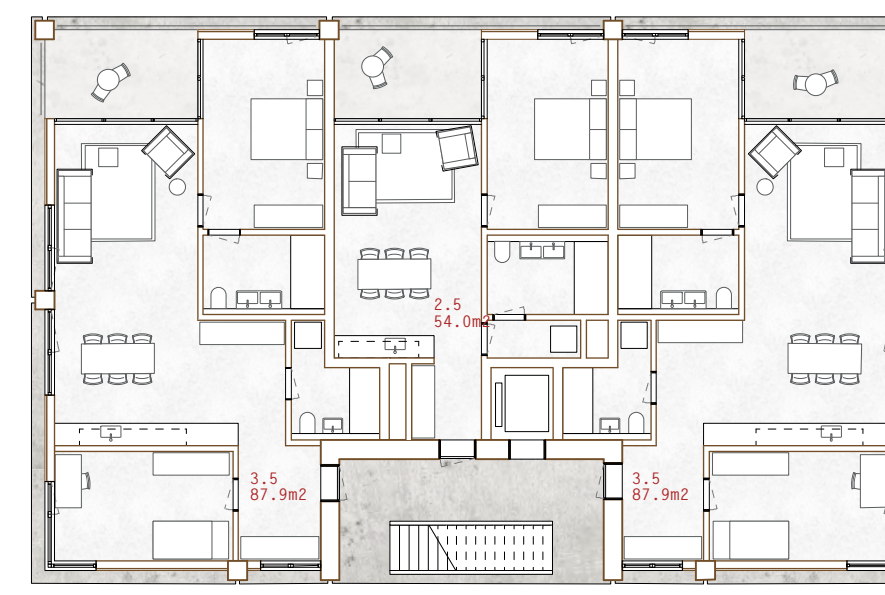
Schnitt BB

VON BALLMOOS
 KRUCKER
 ARCHITEKTEN

VIKTOR BURRI
 ARCHITEKTEN
 ETH FH SIA

+ Weber
 Brönnimann

Arealentwicklung ZPP Unteres Kandergrien
Gemeinde Spiez / Bauherrengesellschaft Unteres Kandergrien, Januar 2018



Normalgeschoss 1:200
0 5 10 15 20 25 30 35 40 45 50 55 60 65 70 75 80 85 90 95 100



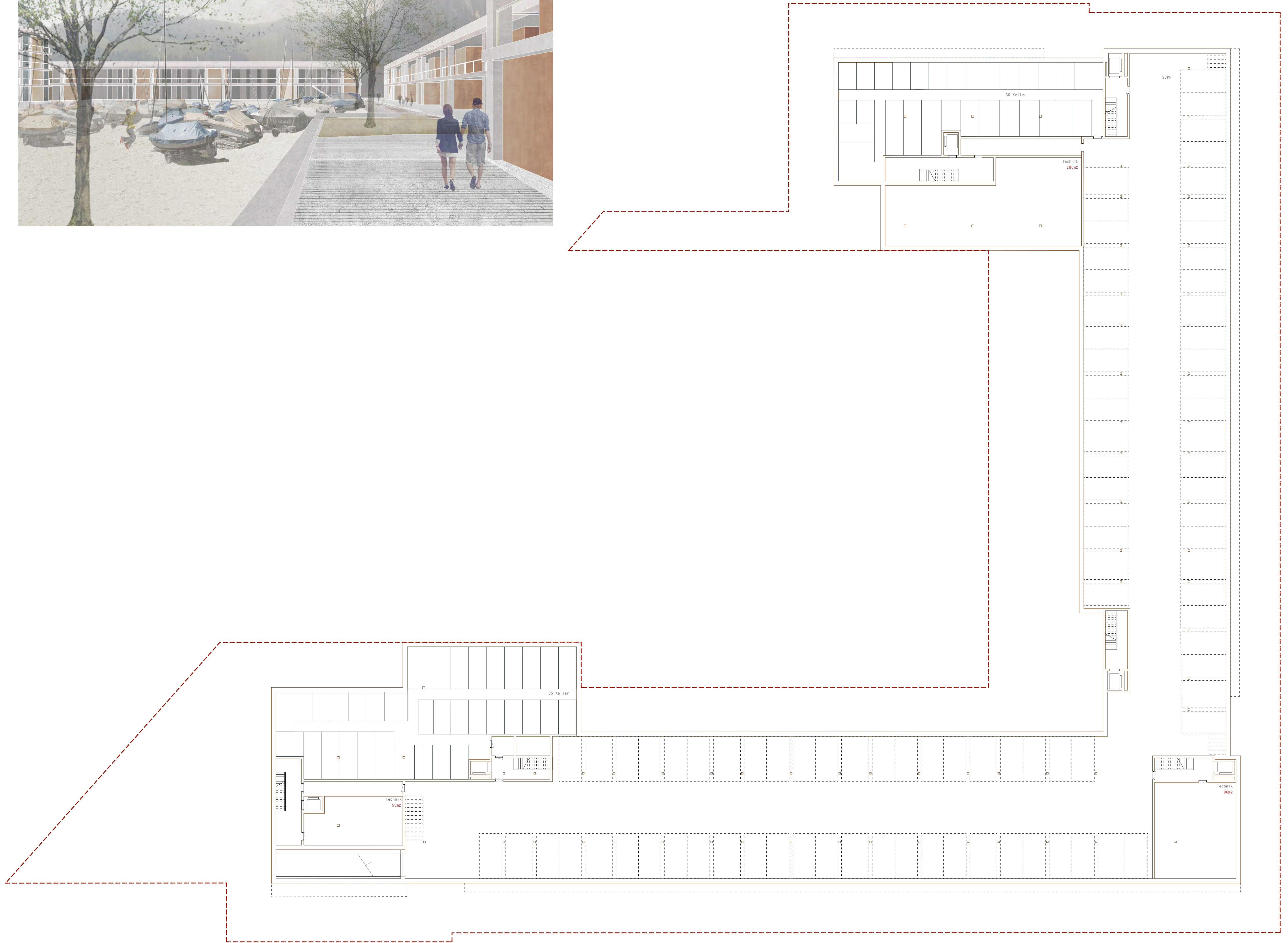
Schnitt CC

VON BALLMOOS
KRUCKER
ARCHITEKTEN

VIKTOR BURRI
ARCHITEKTEN
ETH FH SIA

+ Weber
Brönnimann

Arealentwicklung ZPP Unteres Kandergrien
Gemeinde Spiez / Bauherrengesellschaft Unteres Kandergrien, Januar 2018



Untergeschoss 1:200



Schnitt DD

VON BALLMOOS
KRUCKER
ARCHITEKTEN

VIKTOR BURRI
ARCHITEKTEN
ETH FH SIA

+ Weber
Brönnimann

Arealentwicklung ZPP Unteres Kandergrien
Gemeinde Spiez / Bauherrengesellschaft Unteres Kandergrien, Januar 2018

